

# FOOTLOCK

## AUTOMATIC LOCKING OF MANUALLY OPERATED INDUSTRIAL DOORS

Dear customer,

we would like to introduce you new accessory for locking of manually operated doors TOORS INDY.

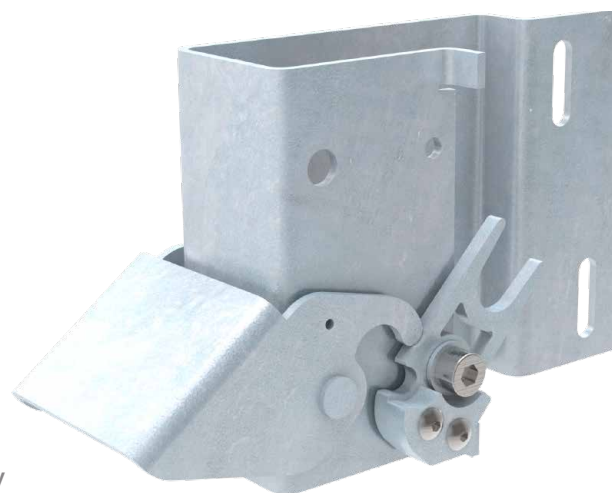
This type of automatic lock is in comparison with slide bolt more user friendly solution.

During closing the door leaf is in closed position automatically locked and secured against opening.

Door leaf is locked by latch which secure bottom roller.

For unlocking is necessary to step on FOOTLOCK and then the latch is released.

FOOTLOCK is installed on vertical angle of track system and could be used only in combination with aluminum adjustable bottom bracket. There are two versions, for installation on right or left side (has to be specified in your purchase order).



**105 €**  
BRUTTO

